

**HEAD
SMART**

**EARLY
DIAGNOSIS
OF BRAIN
TUMOURS**

10 CHILDREN AND TEENAGERS ARE DIAGNOSED WITH A BRAIN TUMOUR EVERY WEEK IN THE UK

**Do you know the
signs and symptoms?**

Symptoms vary in young people but they include:



Persistent/recurrent
headache



Persistent/recurrent
vomiting



Balance/
co-ordination/
walking problems



Abnormal eye
movements



Blurred or
double vision



Behaviour change
(particularly lethargy)



Fits or seizures



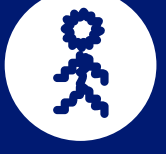
Abnormal head position,
such as wry neck
head tilt or stiff neck



Increasing head
circumference (crossing
centiles)



Delayed or
arrested puberty



headsmart.org.uk

The **BRAIN
TUMOUR
CHARITY**


Children's
Brain Tumour
Research Centre

RCPCH
Royal College of
Paediatrics and Child Health
Leading the way in Children's Health

HeadSmart is funded and promoted by The Brain Tumour Charity and run in partnership with the Children's Brain Tumour Research Centre (CBTRC) and the Royal College of Paediatrics and Child Health (RCPCH). The Brain Tumour Charity Registered Charity No. 1150054 (England and Wales) SC045081 (Scotland), CBTRC Charitable Status Inland Revenue No. X15294, RCPCH Registered Charity No. 1057744 (England and Wales) SC038299 (Scotland) © 2017 The Brain Tumour Charity, CBTRC and RCPCH.